



## **INSULATION FASTENERS**

Designed to meet SMACNA Standards utilizing steel  
as per ASTM-A 591

## Insulation Fasteners (IF) / PERFORATED BASE HANGERS (PIF)

Base : 28 Gauge Metal  
Size : 50mm x 50mm

Pin : 12 Gauge Zinc Plated  
Packaging : 500 pieces per box with SW Washers

Self Adhesive Type - Steel Model No.	Self Adhesive Type - Aluminium Model No.	Perforated Base Type Model No.	Perforated Base Type - Aluminium Model No.	Pin Length (inches/mm)	Use for Insulation size
IF 34	IFA 34	PIF 34	PIFA 34	0.75"	½"
IF 114	IFA114	PIF 114	PIFA 114	1.25"	1"
IF 134	IFA 134	PIF 134	PIFA 134	1.75"	1½"
IF 200	IFA 200	PIF 200	PIFA 200	2.0"	1½"
IF 250	IFA 250	PIF 250	PIFA 250	2.5"	2"
IF 300	-	PIF 300	-	3.0"	3"
IF 80M	-	PIF 80M	-	80mm	3"
IF 400	-	PIF 400	-	4.0"	4"
IF 450	-	PIF 450	-	4.5"	4"
IF 120M	-	PIF 120M	-	120mm	4"
IF 130M	-	PIF 130M	-	130mm	5"
IF 140M	-	PIF 140M </td <td>-</td> <td>140mm</td> <td>5"</td>	-	140mm	5"
IF 150M	-	PIF 150M	-	150mm	6"



Self Adhesive Type - Steel Nail  
Reinforced and plain base options



Self adhesive type- Aluminium nail  
Easy to bend and cut



Perforated Base Type  
Available in both Steel and Aluminium nail.

## Insulation Fasteners Compact (IFC)

Base : 28 Gauge Metal  
Size : 35mm x 35mm

Pin : 12 Gauge Zinc Plated  
Packaging : 1000 pieces per box with two boxes of SW Washers

Model No.	Pin Length (inches)	Use for Insulation size
IFC 114	1.25	1"
IFC 134	1.75	1½"
IFC 200	2.0	1½"
IFC 250	2.5	2"



## SW Washers

Model No.	Description	Pieces per box
SW	Steel Washers 28 Gauge Galvanized	500

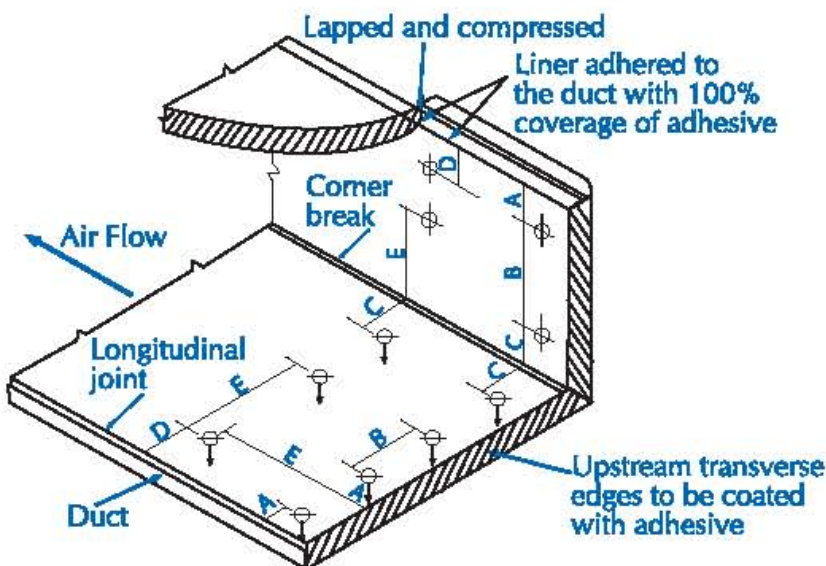


The steel base is made from 28 Gauge metal, a steel pin and double sided self adhesive tape having high shear strength. The use of this pin prevents corrosion on the sheet metal which is caused by the welding fasteners.

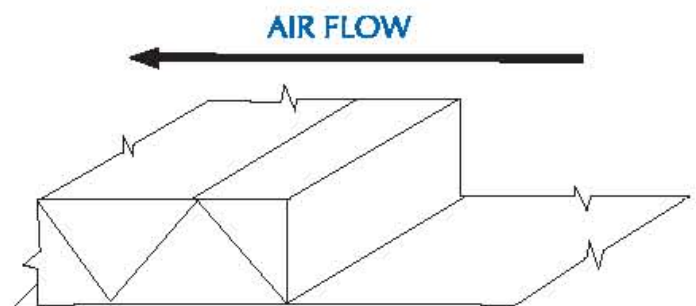
## Adhesive Tape Technical Details

Base Material : Polyethylene foam with aggressive pressure sensitive rubber resin adhesive  
 Service Temperature : - 40 deg C to + 70 Deg C.  
 Highly resistant to abrasion, corrosion and moisture.  
 Confirms to European Directive 2000/53 (Lead, Chromium VI, Mercury, Cadmium free)  
 10 Minute 180 degree Peel Adhesion : 30 N/25mm  
 500 Hour Static Shear (Stainless Steel) : 0.8 kg/cm<sup>2</sup>

## Duct Liner Installation



Velocity	Dimensions				
	A	B	C	D	E
0-2500 FPM (0-12.7 MPS)	3"	12"	4"	6"	18"
	(76.2)	(305)	(102)	(152)	(457)
2501-6000 FPM (12.7-30.5 MPS)	3"	6"	4"	6"	16"
	(76.2)	(152)	(102)	(152)	(406)



DETAIL-A

### Metal Nosing Channel or Zee

Interior width of 8" (200mm) and less does not require pins



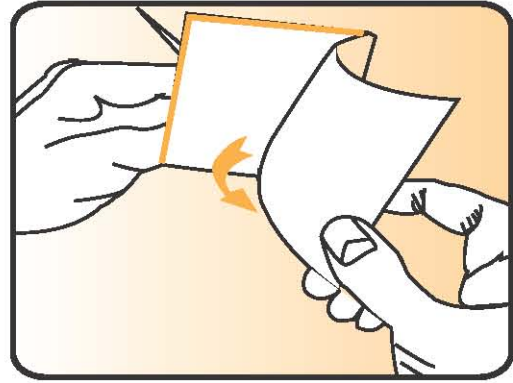
# RECOMMENDED INSTALLATION PROCEDURE

1.



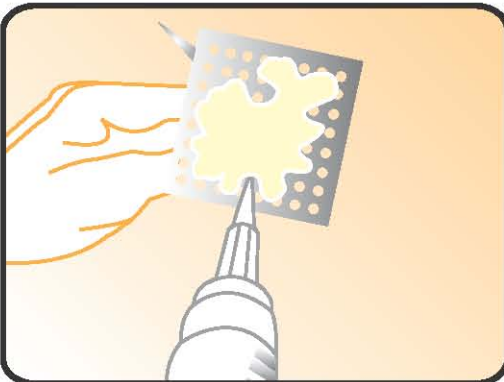
Ensure that the surface is clean and dry, free from oil, grease or any dust particles

2.



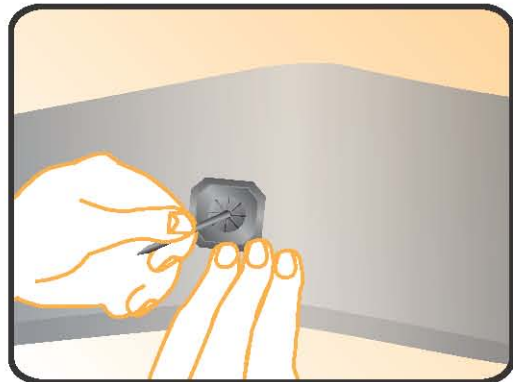
Remove protection paper from the base of the insulation fastener.

3.



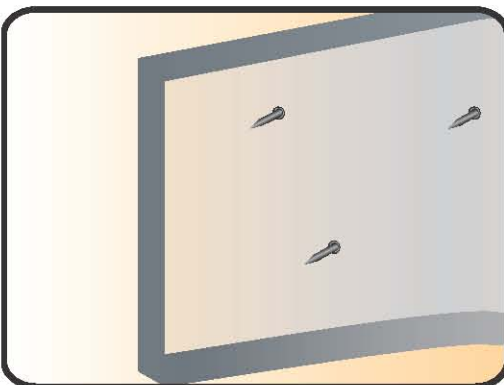
Apply glue to the base of the perforated hanger and fix to the surface

4.



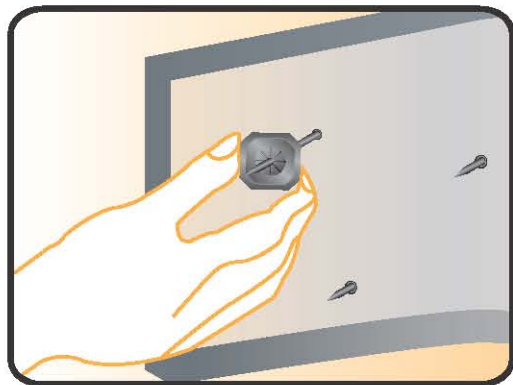
Firmly press the base of the pin at the required position on to the steel surface.

5.



Fix the insulation over the pins

6.



Lock the insulation firmly to the steel surface using the steel washers provided.